



# Risk Assessment Form

## Deer Park, Cowley



Activity: Grass Sledging					Date: 21/09/2020 Review : Dec 2020	
Reviewed by: Daniel Rochelle Position: Centre Manager			Numbers Participants	Max 12	Sections: Rainbows/Brownies/Guides/ Senior Section/leaders	
Consent for Activity required: Yes			Venue: Girlguiding Gloucestershire HQ Deer Park, Cowley, Cheltenham GL53 9NJ		Type of instructor qualifications required: NO	
Hazard	Who is affected?	What controls are in place?	Risk level (L/M/H)	Are further controls necessary?	Action by & date	Review by & date
Injury due to using inappropriate ground for sledging	Participants non-participants	Only use the grass sledging slope which is clearly marked out on Bubb's Hill. No other areas should be used for the activity	L	Group leader supervision	Continuous	Dec 2020
Collision	Participants	Guiders shown braking procedure Only 1 grass sledge on the slope at any one time	L	Group leader supervision, management and control	Continuous	Dec 2020
Hand Injury / Leg Injury	Participants	Guiders shown sitting position, arms and legs within sledge at all times, whilst descending slope	L	Group leader supervision	Continuous	Dec 2020
People being hit by sledge	Participants	Shown how to steer and brake, so they do not hit any obstacles. Participants to walk back up on the left (facing up hill). No other participants to be situated on the slope	L	Group leader supervision	Continuous	Dec 2020
Damaged Equipment	Participants	Sledges are checked prior to each session at time of handover of the activity	L	Centre Manager to be informed of any defects or damage to sledges	Continuous	Dec 2020

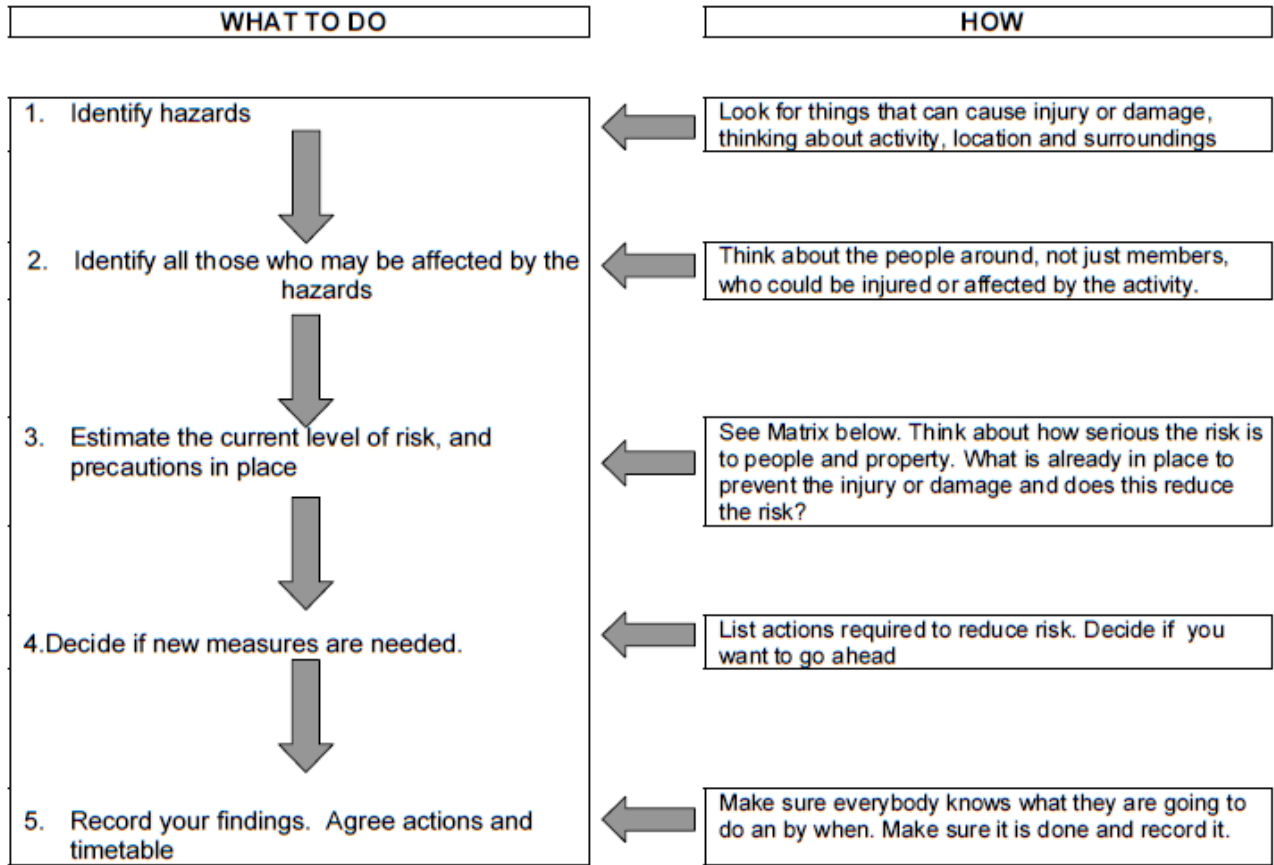
Carrying sledges	Participants	Sledges can be dragged from the store to the slope	L	Group leader supervision	Continuous	Dec 2020
Vehicular accident when walking to activity (on road)	Participants / Leaders	Ensure the group stays together, walks in single file on roadway facing on-coming traffic. If possible, front and rear leaders should wear hi-viz jackets. Ensure current government regulations on social distancing	M	Hi viz jackets may be borrowed from the site manager		Dec 2020
Asthma or breathing problems	Participants / Leaders	Because it is necessary to go up and down the hill frequently, it is recommended inhalers are carried by participants and leaders	M	Group leader supervision and monitoring	Continuous	01/04 /2020

Transmission of Coronavirus between participants and/or leaders	Participants / Leaders	<p>One sledge is assigned to one participant and sledges should not be mixed or shared.</p> <p>Sledge users are to use hand sanitiser before and after the activity.</p> <p>The sledges are sanitised before the activity and again after the activity. This function of sanitisation should be carried out by the Centre Manager or suitably competent volunteer using D10 Sanitiser and disposable clothes</p>	M	<p>Ensure adequate anti-bacterial and anti-viral wipes are provided.</p> <p>Ensure hand sanitiser is available for use.</p>	Continuous	Dec 2020
---	------------------------	--	---	---	------------	----------

This document should be signed-off by the commissioner who supports your unit. Depending on your area this will be your district or division commissioner .

Commissioner's signature: SA Anderson Date: 8 Oct 2020

## RISK MANAGEMENT



## RISK ASSESSMENT MATRIX

	Severity	Slight Harm	Harmful	Extremely Harmful
Likelihood		superficial injuries, minor cuts and bruises	minor fractures, ill health leading to minor disability	multiple injuries, major fractures, fatalities
<b>UNLIKELY</b> Rarely happens		<b>LOW</b>	<b>LOW</b>	<b>MEDIUM</b>
<b>LIKELY</b> Often happens		<b>LOW</b>	<b>MEDIUM</b>	<b>HIGH</b>
<b>VERY LIKELY</b> Nearly always happens		<b>MEDIUM</b>	<b>HIGH</b>	<b>HIGH</b>