



Risk Assessment Form

Deer Park, Cowley



Activity: Grass Sledging				Date: 26/05/2021 Review : Dec 2021		
Reviewed by: Daniel Rochelle & Anne Anderson Position: Centre Manager & County Commissioner		Number of Participants: Max 12 at any one time		Sections: Rainbows/Brownies/Guides/Rangers		
Consent for Activity required: Yes		Venue: Girlguiding Gloucestershire HQ Deer Park, Cowley, Cheltenham GL53 9NJ		Type of instructor qualifications required: NO		
Hazard	Who is affected?	What controls are in place?	Risk level (L/M/H)	Are further controls necessary?	Action by & date	Review by & date
Injury due to using inappropriate ground for sledging	Participants non-participants	Only use the grass sledging slope which is clearly marked out on Bubbs Hill. No other areas should be used for the activity.	L	Group leader supervision	Deer Park Manager or Volunteer - Ongoing	Dec 2021
Collision	Participants	Group leaders shown braking procedure. Only 1 grass sledge on the slope at any one time.	L	Group leader supervision, management and control	Deer Park Manager or Volunteer - Start of each hire period	Dec 2021
Hand Injury / Leg Injury	Participants	Group leaders shown sitting position, arms and legs within sledge at all times, whilst descending slope.	L	Group leader supervision	Deer Park Manager or Volunteer - Start of each hire period	Dec 2021
People being hit by sledge	Participants	Group leaders shown how to steer and brake, so they do not hit any obstacles. Participants to walk back up on the left (facing up hill). No other participants to be situated on the slope.	L	Group leader supervision	Deer Park Manager or Volunteer - Start of each hire period	Dec 2021

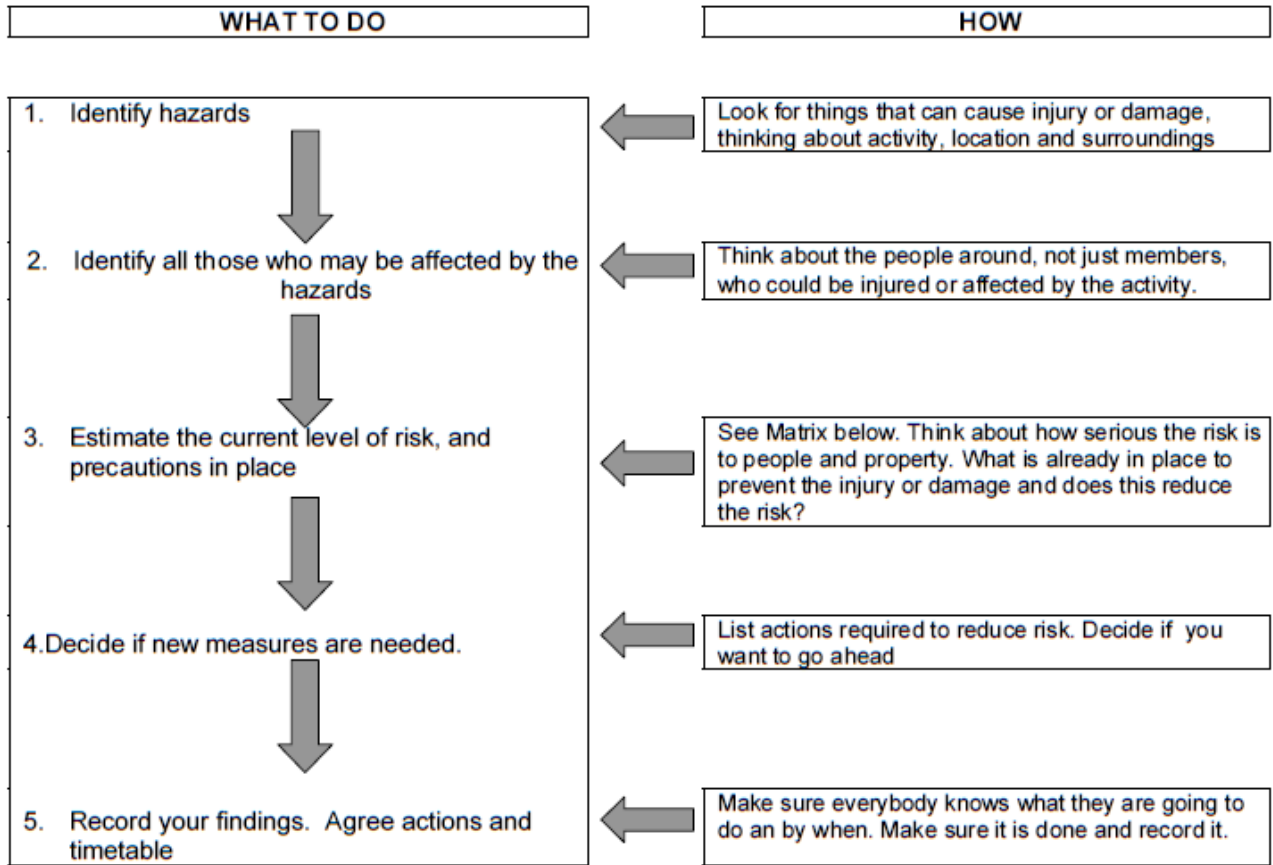
Damaged Equipment	Participants	Sledges are checked prior to each session.	L	Centre Manager to be informed of any defects or damage to sledges	Deer Park Manager or Volunteer - Start of each hire period	Dec 2021
Carrying sledges	Participants	Sledges can be dragged from the store to the slope.	L	Group leader supervision	Group Leaders - Ongoing	Dec 2021
Asthma or breathing problems	Participants / Leaders	It is necessary to go up and down the hill frequently, therefore it is recommended inhalers are carried by participants and Group Leaders.	M	Group leader supervision and monitoring	Group Leaders - Prior to the start of each hire period	Dec 2021

Transmission of Coronavirus between participants and/or leaders	Participants / Leaders	<p>One sledge is assigned to one participant at any one time.</p> <p>If more than one participant is to use the sledge during each hire period then they should be cleaned between users.</p> <p>Sledge users are to use hand sanitiser before and after the activity.</p> <p>The sledges are sanitised before the activity and again after the activity. This function of sanitisation should be carried out by the Centre Manager or suitably competent volunteer using D10 Sanitiser and disposable cloths.</p>	M	<p>Ensure adequate anti-bacterial and anti-viral wipes are provided.</p> <p>Ensure hand sanitiser is available for use.</p>	<p>Deer Park Manager or Volunteer - Start and end of each hire period</p> <p>Group Leaders - During hire period</p>	Dec 2021
---	------------------------	--	---	---	---	----------

This document should be signed-off by the commissioner who supports your unit. Depending on your area this will be your district or division commissioner .

Commissioner's signature:  Date: 28 May 2021

RISK MANAGEMENT



RISK ASSESSMENT MATRIX

	Severity	Slight Harm	Harmful	Extremely Harmful
Likelihood		superficial injuries, minor cuts and bruises	minor fractures, ill health leading to minor disability	multiple injuries, major fractures, fatalities
UNLIKELY Rarely happens		LOW	LOW	MEDIUM
LIKELY Often happens		LOW	MEDIUM	HIGH
VERY LIKELY Nearly always happens		MEDIUM	HIGH	HIGH